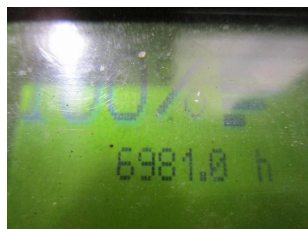
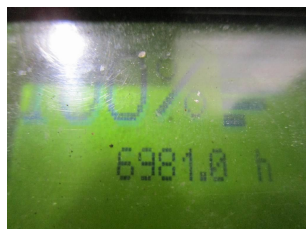
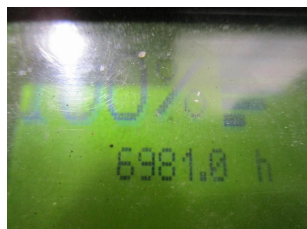
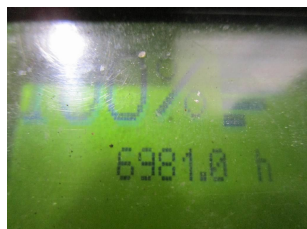
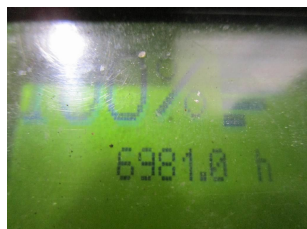
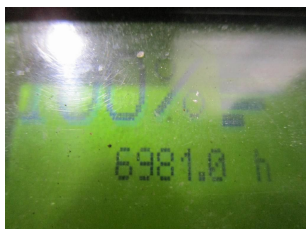


## T1035 LINDE L 14 AP 133 - Paleciak z masztem



|                        |                                 |              |             |
|------------------------|---------------------------------|--------------|-------------|
| Numer identyfikacyjny: | T1035                           | Rok:         | 2012        |
| Producent:             | LINDE                           | Wolny skok:  | 0 mm        |
| Maszt:                 | Teleskop / Panoramiczny (2W290) | Naped:       | Elektryczny |
| Typ:                   | L 14 AP 133                     | Widły:       | 1250 mm     |
| Wysokość zabudowy:     | 1900 mm                         | Stan:        | jezdny      |
| Udzwig:                | 1400 kg                         | Motogodziny: | 6981        |
| Wysokość podnoszenia:  | 2900 mm                         | Uwaga:       | B,L,7x BA   |
| :                      |                                 |              |             |