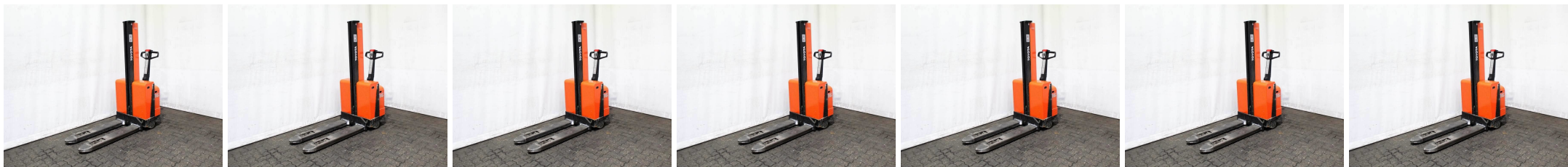


## M6302 TOYOTA SMH 16 - Pedestrian stackers



ID-Number:	M6302	YOM:	2004
Manufacturer:	TOYOTA	Free lift:	0 mm
Mast:	Mono (1F155)	Drive:	Electro
Type:	SMH 16	Forks:	1150 mm
Closed height:	1870 mm	State:	Running condition
Capacity:	800 kg	Running hours:	13494
Lifting height:	1550 mm	Annotation:	B,L,7x BA
:			