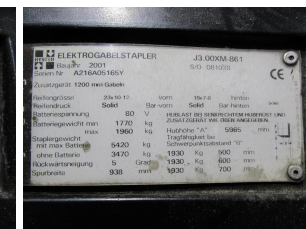
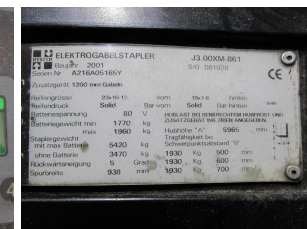
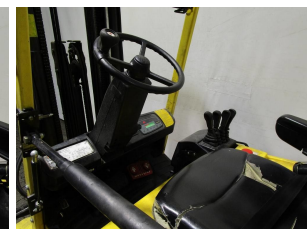
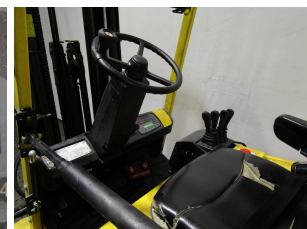


## W5006 HYSTER J 3.00 XM-861 - Chariot élévateur frontal



Numéro d'identification:	W5006	Année:	2001
Fabricant:	HYSTER	Levée libre:	1970 mm
Mât:	Triplex (3F596)	Propulsion:	Électrique
Type:	J 3.00 XM-861	Fourches:	0 mm
Hauteur mât baissé:	2640 mm	État:	moyen
Capacité:	3000 kg	Heures:	8212
Hauteur d'élévation:	5965 mm	Remarque:	DZH,B,4x SE
:			